



230 Meek Rd.
Gastonia, NC 28056
Ph:800-343-4542, FAX 800-554-0407

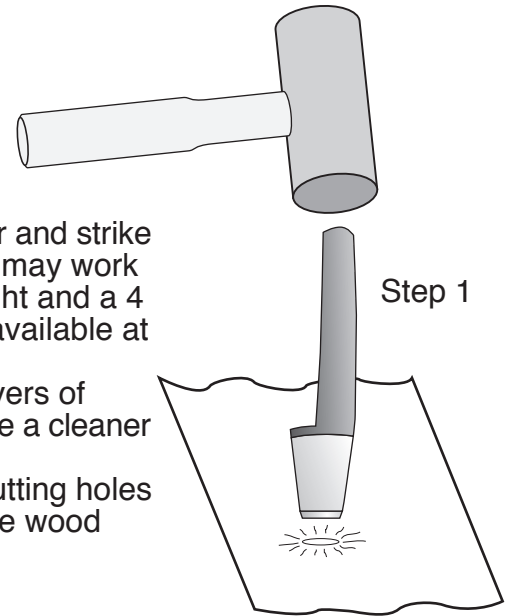
Before using: Make sure all tool components are clean and free of any soil from manufacturing.

Step 1:

Cut hole in fabric by placing wood block under fabric, hold cutter and strike with hammer. For grommet sizes 0 through 4, a claw hammer may work fine. For grommet sizes 6 through 10, a tack hammer is too light and a 4 lb hand sledge is recommended. These are inexpensive and available at most hardware stores or lumber yards.

When using a #6, #8 or #10 hole cutter, sometimes placing 4 layers of notebook paper under the fabric before cutting will give and make a cleaner cut.

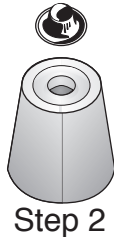
Note: Using plywood, oak or pine 2x4's may result in difficulty cutting holes in fabric. For best results we suggest using "Rock Maple" as the wood block.



Step 1

Important notes of caution:

- Always wear safety glasses when using any hammer to strike metal!!
- Carefully aim your blows so as not to strike your hand or other persons!!

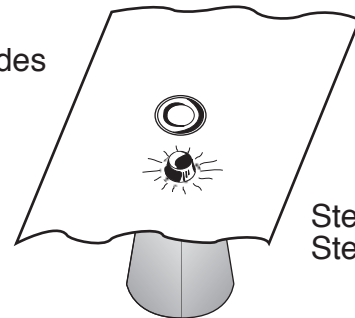


Step 2

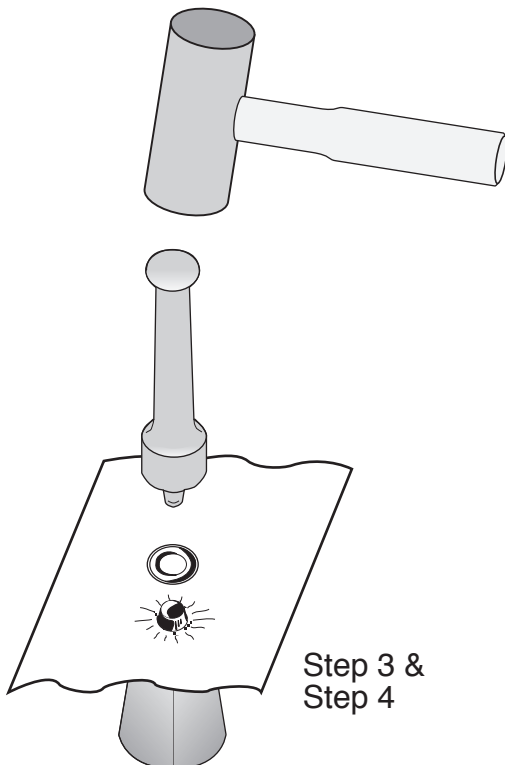
Step 2: Place grommet on anvil.

Step 3: Place fabric face down over grommet so grommet protrudes through hole cut in Step 1.

Step 4: Drop washer over grommet with the concave side against the fabric.



Step 3 &
Step 4



Step 3 &
Step 4

Step 5: Set plunger in grommet and strike until fabric is secured between the washer and the grommet. Use claw hammer for grommet sizes 0 through 4, and a hand sledge for grommet sizes 6 through 10.

Important notes of caution:

- Always wear safety glasses when using any hammer to strike metal!!
- Carefully aim your blows so as not to strike your hand or other persons!!